

LINXS



G201B

PURE ELECTRIC VAN



LONG ENDURANCE AND STRONG POWER

- 300km+ range and fast charging (from 30% to 80%) takes 0.5h, ensure your timely delivery,
- it has a powerful output of 108PS and a torque of 240N.m.
- Wind resistance coefficient is only 0.328, more power saving.
- Equipped with a 53kWh battery from CATL and a low-temperature electric heating system, it also has an IP68 dust-proof and waterproof rating.



LARGE CARGO SPACE

- The extra-long cargo space, which is 3.05m in length and has a capacity of 7m³, enables the transportation of longer goods.
- The design of the rear door with double doors, along with the ultra-low cargo compartment height of 0.6m, makes the loading and unloading process more convenient.





INTELLIGENT COCKPIT

The design of the intelligent central control combined with physical buttons is more user-friendly. It offers a pure electric driving experience with simple and interesting operation.

HIGH CEILING SPACE & ERGONOMIC SEATING

- The comfortable driving space allows you to easily handle various traffic scenarios.
- Storage space, transportation and life are more convenient.



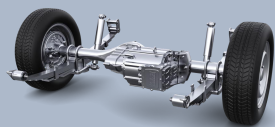
CONVENIENT STORAGE SPACE

- The interior of the cargo space is more like a cube, which can load and unload as much cargo as possible.
- The cargo compartment floor adopts an aluminum patterned floor, which is more scratch-resistant and durable.

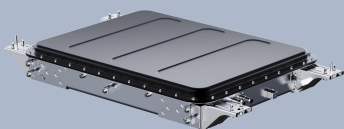


EXTREMELY SAFE

The cockpit features a groundbreaking long-nose styling design, and with a high-strength steel body, it offers supreme safety.



The design of an integrated rear axle



The battery is designed in an embedded manner



High-strength steel cage-type body structure

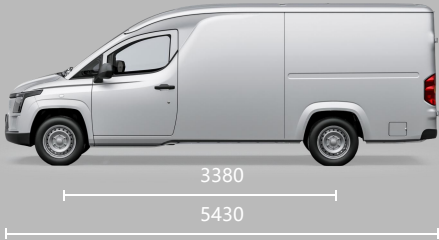


Standard ABS+EBD



Hill-start Assist Control

Model		G201B
Dimensions (mm)	Overall dim	5430x1760x2050
	Cargo compartment dim	3050x1605x1435
	Wheelbase	3380
	Front/rear wheel track	1438/1527
Capability (kg)	GVWR	3000
	Curb weight	1480
	carrying capacity	1390
Power parameter	Driving range (km)	328(CLTC)
	Maximum speed (km/h)	80
Battery	Battery type	LFP (CATL)
	Battery energy (kWh)	53.58
	Fast charging time	30Min (SOC30%-80%,25°C)
	Battery heating	●
Driving Motor	Max. power (KW)	80
	Max. torque (N·m)	240
Passability	Max. Gradeability%	≥26.5
Chassis and braking system	Tire specifications	185/65R15LT 12PR
	Front suspension	Macpherson independent suspension
	Rear suspension	6 steel plate springs
	Drive form	rear-wheel drive
	Brake system	Front disc and rear drum hydraulic brakes
Exterior & Interior	Rudder	LHD
	Seating capacity	2
	gear-shift mechanism	Rotary Automatic
	cargo compartment tailgate	double door
	side door opening	sliding door
	sunshade	Single sun visor (main driver)
	Driver's seat adjustment	Manual 4-way adjustment
	Seat fabric	Fabric
	Cargo compartment lighting	●
	Driver's side lighting	●
	rear fog lights	●
	Height adjustable headlamps	●
	12V on-board power	●
	ETC Power Interface	●
	USB charging port	●
Safety Configuration	reversing radar	●
	low-speed beep	●
	Seat Belt Reminder	●
	ABS+EBD	●
Featured Configurations	Central locking	●
	EPS electric power steering	●
	Cabin air conditioning	●
	Electric Heating System	●
	Electric lift window	●
	Crawl Control	●
	Remote key	●
Other Configurations	energy recovery	●
	Fast charging function	●
	colors	Candy white
	Driving mode switching	Standard/Economic
	10.1-inch center control entertainment system	○
	6.6kw slow charging function + slow charger	○
	Cargo floor	patterned aluminum
Note: Standard ● Optional ○		



LINXIS

**G201B EV VAN
MAXIMIZE YOUR BUSINESS**

