



G100-R

PURE ELECTRIC VAN

LINXYS

LINXYS



Your partner for sustainable transport



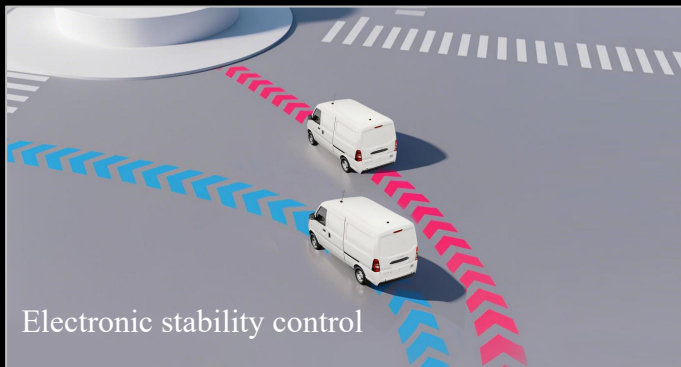
252km+ range and fast charging



5.2m³ large loading space



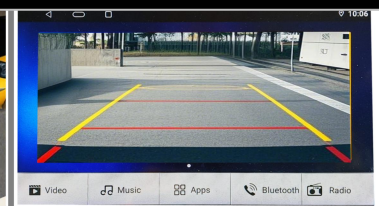
The CATL battery pack is safe and efficient



Electronic stability control



LED DRLs



Reversing radar and image

LINX15



Nice interior experience



High quality seat
good support、 anti-slip design



Dual airbag



Knob-type gear shift



Electric lifting

Our product has successfully obtained the WVTA certification and fully complies with the ECE collision safety regulations.



Vehicles with other seating layouts.



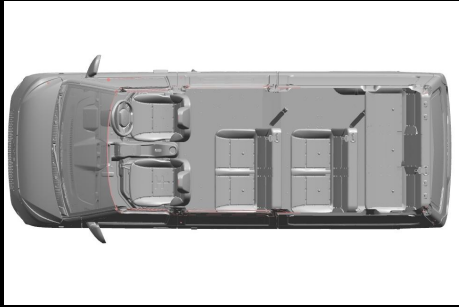
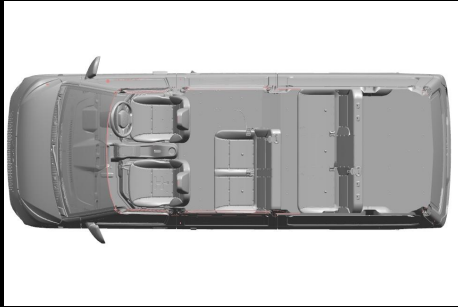
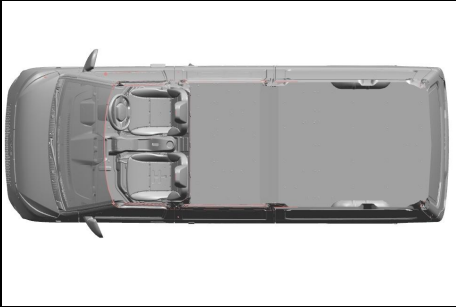
2 seats



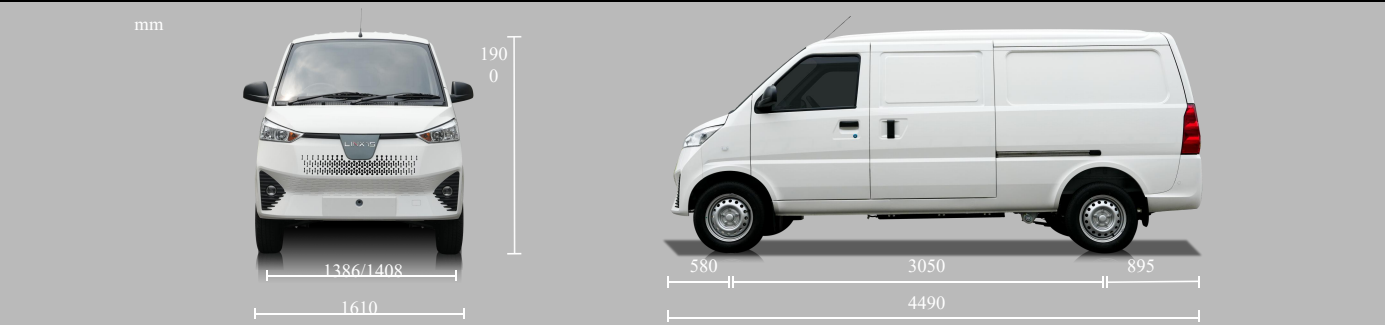
5 seats



7 seats



Model		G100-R		
		2 seats	5 seats	7 seats
Dimensions (mm)	Overall dim.	4490×1610×1900		
	Cargo compartment dim.	2668×1457×1340	1596×1457×1340	1440×1457×1340
	Wheelbase	3050		
	Front/rear wheel track	1386/1408		
Capability (kg)	Curb weight	1390	1430	1470
	GVWR	2510	2510	2350
	Payload	970	705	/
Power parameter	Driving range (km)	252(WLTP)		
	Maximum speed (km/h)	90		
Battery	Battery energy (kWh)	41.86		
	Fast charging time	30Min（SOC30%-80%,25℃）		
	Battery type	LFP		
	Battery heating	●		
Driving Motor	Rated/peak power (kW)	30/60		
	Rated/peak torque (N·m)	90/220		
	Type	PMSM		
Passability	Minimum ground clearance (mm)	125		
	Front/rear overhang (mm)	580/895		
	Maximum gradability (%)	≥20		
	Minimum turing diameter (m)	11.9		
Chassis and braking system	Front suspension	Macpherson independent suspension		
	Rear suspension	Leaf spring non-independent suspension		
	Tyres (F/R)	175/70R14C		
	Brake type	Front disc and rear drum hydraulic braking system		
Safety	Driver airbag	●		
	Passenger airbag	○		
	ABS+EBD	●		
	ESC	○		
Others	Rudder	RHD		
	colors	Candy white		
	Reversing radar	●		
	TPMS	○		
	Central control screen and reversing image	○		
	Charging standard	CCS2（DC+AC） or CHAdeMO+SAEJ1772（DC+AC）		
●:Standard equipment ○:Optional equipment —: Not equipped				



LINXS

**G100-R EV VAN
MAXIMIZE YOUR BUSINESS**

